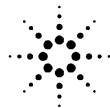


**Agilent 16034G/H Test Fixture**

# **Service Manual**

**Third Edition**



**Agilent Technologies**

Part No. 16034-90100

**March 2000**

Printed in Japan

---

## Notices

The information contained in this document is subject to change without notice.

This document contains proprietary information that is protected by copyright. All rights are reserved. No part of this document may be photocopied, reproduced, or translated to another language without the prior written consent of the Agilent Technologies.

Agilent Technologies Japan, Ltd.

Component Test PGU-Kobe

1-3-2, Murotani, Nishi-Ku, Kobe-shi, Hyogo, 651-2241 Japan

© Copyright 1999, 2000 Agilent Technologies Japan, Ltd.

---

## Manual Printing History

The manual's printing date and part number indicate its current edition. The printing date changes when a new edition is printed. (Minor corrections and updates incorporated in reprints do not necessitate a new printing date.) The manual part number changes when extensive technical changes are incorporated.

January 1999	First Edition (part number: 16034-90100)
April 1999	Second Edition
March 2000	Third Edition (part number: 16034-90100)

---

## Safety Summary

The following general safety precautions must be observed during all phases of operation, service, and repair of this instrument. Failure to comply with these precautions or with specific WARNINGS elsewhere in this manual may impair the protection provided by the equipment. Such noncompliance would also violate safety standards of design, manufacture, and intended use of the instrument.

The Agilent Technologies assumes no liability for the customer's failure to comply with these requirements.

- Ground the instrument

To avoid electric shock hazard, the instrument chassis and cabinet must be grounded by using the supplied power cable's grounding prong.

- DO NOT operate in an explosive atmosphere

Do not operate the instrument in the presence of flammable gasses or fumes. Operation of any electrical instrument in such an environment clearly constitutes a safety hazard.

- Keep away from live circuits

Operators must not remove instrument covers. Component replacement and internal adjustments must be made by qualified maintenance personnel. Do not replace components with the power cable connected. Under certain conditions, dangerous voltages may exist even with the power cable removed. To avoid injuries, always disconnect power and discharge circuits before touching them.

- DO NOT service or adjust alone

Do not attempt internal service or adjustment unless another person, capable of rendering first aid and resuscitation, is present.

- DO NOT substitute parts or modify instrument

To avoid the danger of introducing additional hazards, do not install substitute parts or perform unauthorized modifications to the instrument. Return the instrument to a Agilent Technologies Sales and Service Office for service and repair to ensure that safety features are maintained in operational condition.

- Dangerous Procedure Warnings

Warnings, such as the example below, precede potentially dangerous procedures throughout this manual. Instructions contained in the warnings must be followed.

---

**WARNING**

---

**Dangerous voltages, capable of causing death, are present in this instrument. Use extreme caution when handling, testing, or adjusting this instrument.**

---

## Certification

Agilent Technologies certifies that this product met its published specifications at the time of shipment from the factory. Agilent Technologies further certifies that its calibration measurements are traceable to the United States National Institute of Standards and Technology, to the extent allowed by the Institution's calibration facility, or to the calibration facilities of other International Standards Organization members.

---

## Warranty

This Agilent Technologies instrument product is warranted against defects in material and workmanship for a period corresponding to the individual warranty periods of its component products. Instruments are warranted for a period of one year. Fixtures and adapters are warranted for a period of 90 days. During the warranty period, Agilent Technologies will, at its option, either repair or replace products that prove to be defective.

For warranty service or repair, this product must be returned to a service facility designated by Agilent Technologies. Buyer shall prepay shipping charges to Agilent Technologies and Agilent Technologies shall pay shipping charges to return the product to Buyer. However, Buyer shall pay all shipping charges, duties, and taxes for products returned to Agilent Technologies from another country.

Agilent Technologies warrants that its software and firmware designated by Agilent Technologies for use with an instrument will execute its programming instruction when properly installed on that instrument. Agilent Technologies does not warrant that the operation of the instrument, or software, or firmware will be uninterrupted or error free.

---

## Limitation Of Warranty

The foregoing warranty shall not apply to defects resulting from improper or inadequate maintenance by Buyer, Buyer-supplied software or interfacing, unauthorized modification or misuse, operation outside the environmental specifications for the product, or improper site preparation or maintenance.

---

### **IMPORTANT**

No other warranty is expressed or implied. Agilent Technologies specifically disclaims the implied warranties of merchantability and fitness for a particular purpose.

---

## Exclusive Remedies

The remedies provided herein are buyer's sole and exclusive remedies. Agilent Technologies shall not be liable for any direct, indirect, special, incidental, or consequential damages, whether based on contract, tort, or any other legal theory.

---

## **Assistance**

Product maintenance agreements and other customer assistance agreements are available for Agilent Technologies products.

For any assistance, contact your nearest Agilent Technologies Sales and Service Office. Addresses are provided at the back of this manual.



---

# **1** **Service**

This chapter provides information on servicing and proper maintenance.

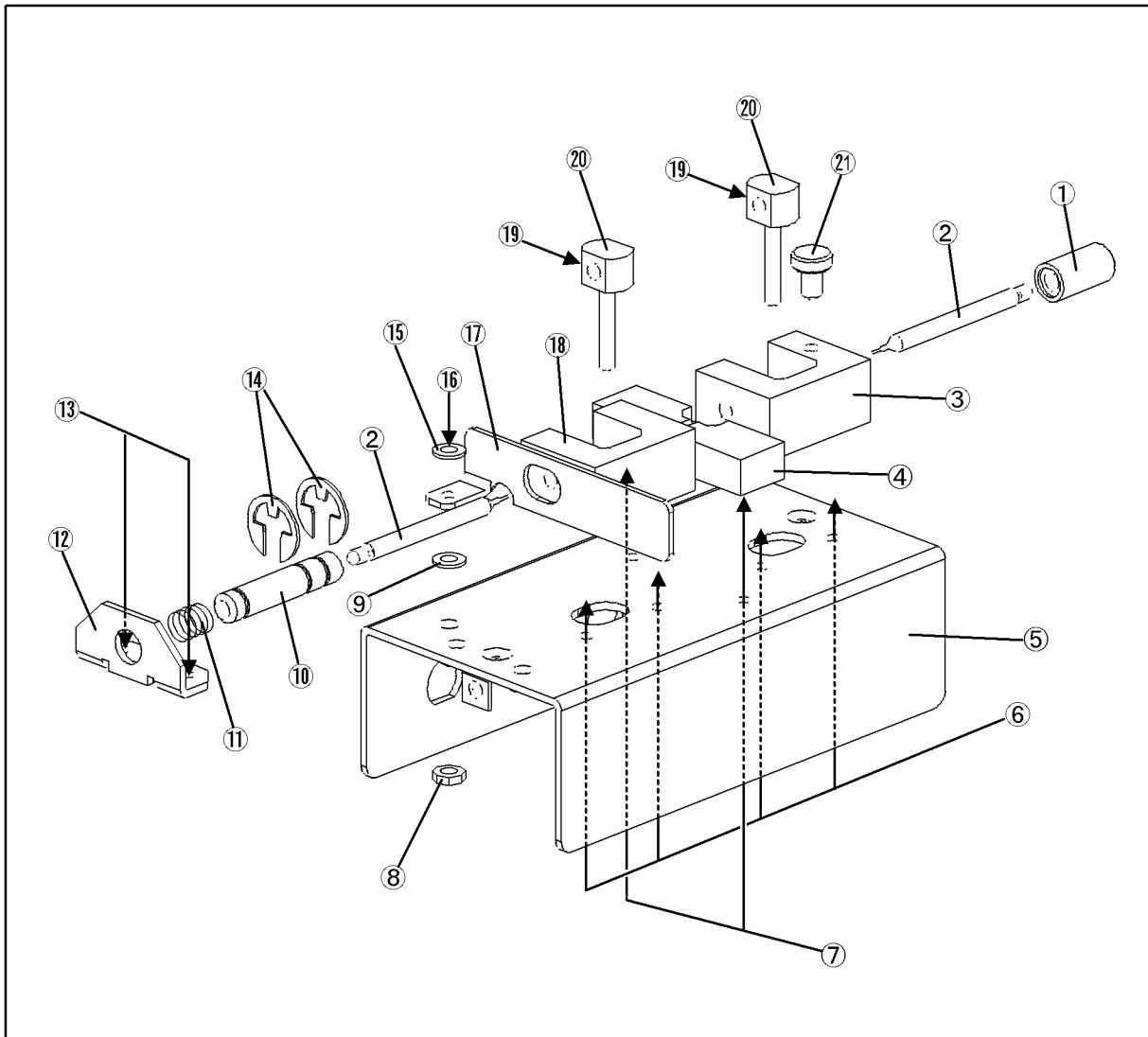
## Maintenance

An exploded view of the 16034G/H for parts identification is shown in Figure 1-1 and Figure 1-2. Do not disassemble any further than shown. Maintenance consists principally of cleaning contacts and replacing worn or damaged parts. Take special care when cleaning contacts.

To order parts, use the Agilent part numbers listed in Table 1-1 and Table 1-2. If a faulty part is located in an assembly that cannot be disassembled, order the next higher assembly or return the fixture to the nearest Agilent Technologies Sales/Service Office for repair or replacement.

### Replacable Parts

Figure 1-1 Replacable Parts (part 1 of 2)

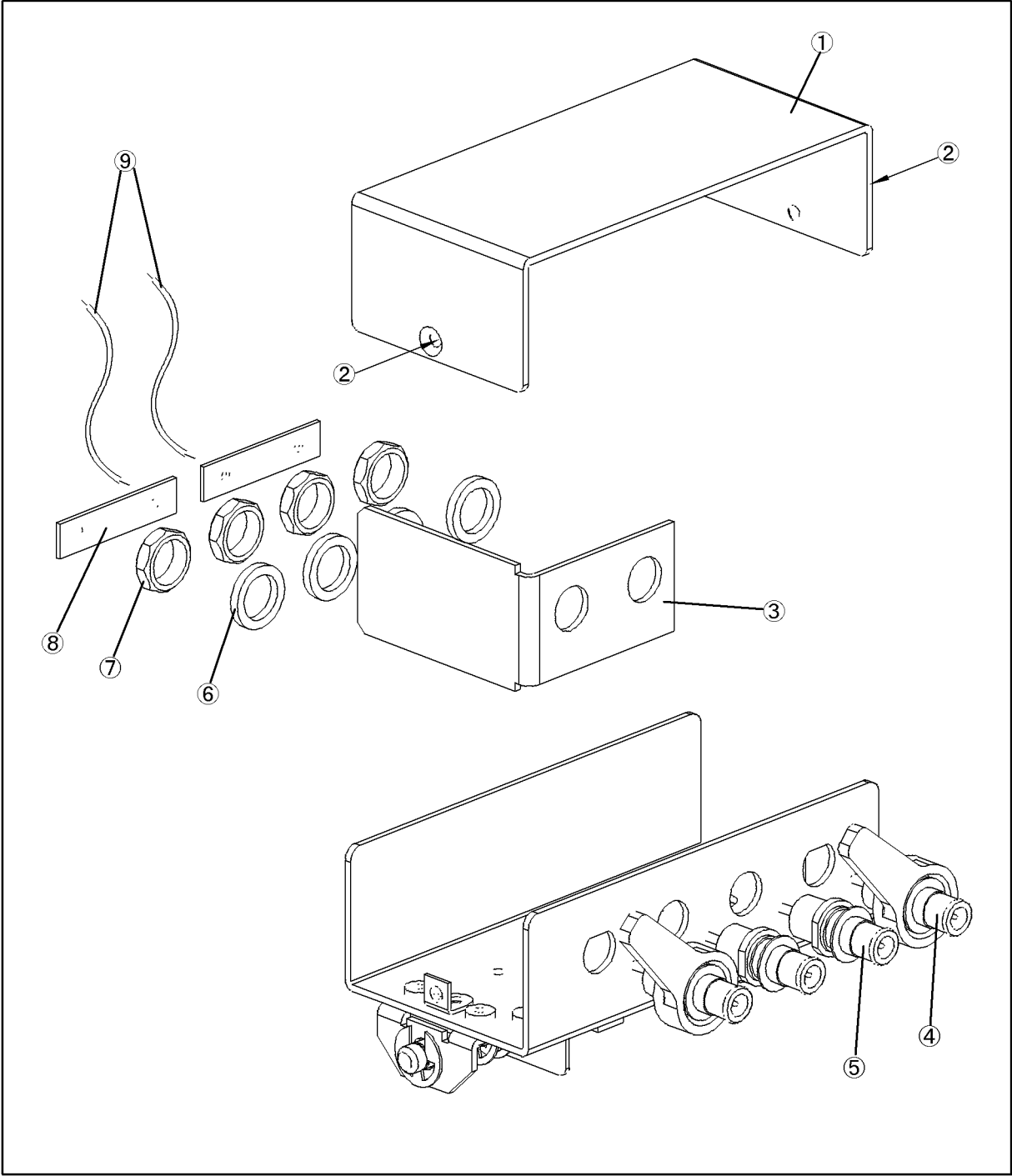




**Table 1-1 Replacable Parts (part 1 of 2)**

Reference Designator	Agilent Part No.	Qty.	Description
1	16034-25013	1	KNOB
2	16034-24011	2	ELECTRODE
3	16034-25011	1	BLOCK
4	16034-25014	1	BLOCK (16034G)
	16034-25021	1	BLOCK (16034H)
5	16034-04011	1	COVER TOP
6	0515-1550	4	SCREW
7	0515-1550	2	SCREW
8	0535-0031	1	NUT-HEX W/LOCKER
9	3050-1139	1	WASHER
10	16034-25015	1	KNOB
11	16034-08001	1	SPRING
12	16034-01211	1	BRACKET
13	0515-1550	2	SCREW
14	0510-0083	2	RETAINER
15	3050-0891	1	WASHER
16	0515-0920	1	SCREW
17	16034-05011	1	LEVER
18	16034-25012	1	BLOCK
19	3030-0007	2	SCREW
20	16034-24012	2	PLUG
21	16034-24014	1	SCREW

Figure 1-2 Replacable Parts (part 2 of 2)



**Table 1-2 Replacable Parts (part 2 of 2)**

<b>Reference Designator</b>	<b>Agilent Part No.</b>	<b>Qty.</b>	<b>Description</b>
1	16034-04012	1	COVER BOTTOM
2	0515-0914	2	SCREW
3	16034-00601	1	PLATE - SHIELD
4	16012-7122	2	BNC - ASSY
5	1250-1798	2	CONNECTOR-BNC
6	2190-0016	4	WASHER
7	2950-0043	4	NUT-HEX-DBL-CHAM
8	16047-00617	2	PLATE
9	16034-68021	1	JUMPER WIRE (2 ea)

Service  
**Maintenance**